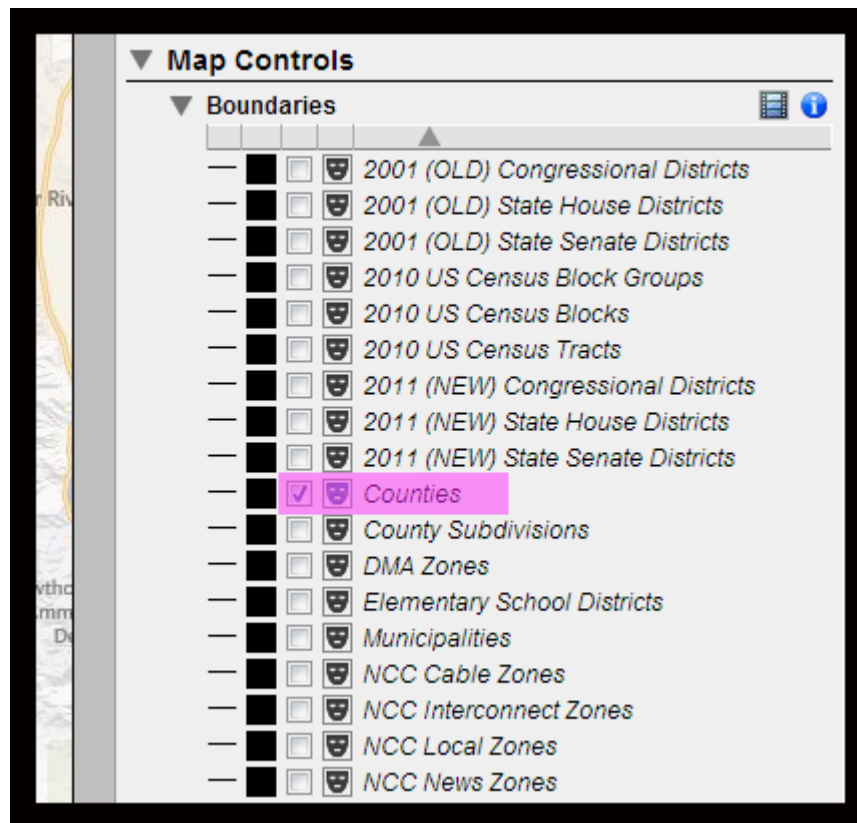


VoterMapping – Masking

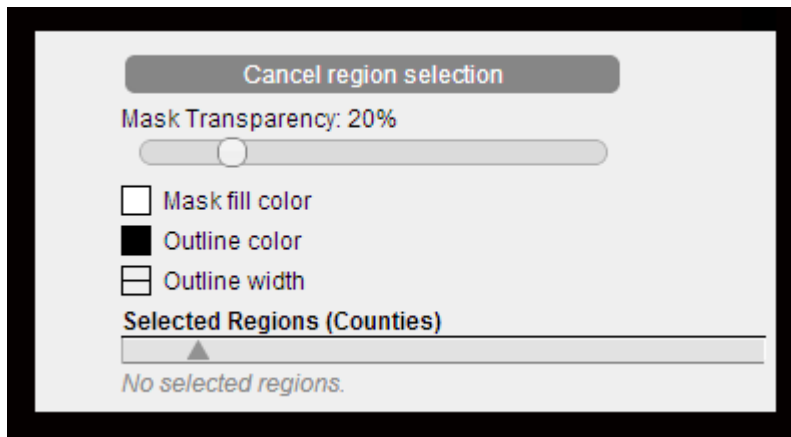
Masking

Masking allows you to select and highlight individual regions from within a single Boundary layer, while masking over any unselected regions.

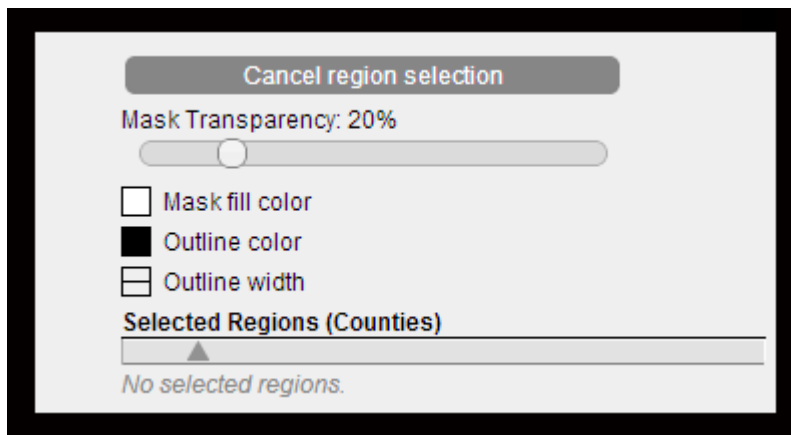
1. In the side panel, open up the **Boundaries** section within **Map Controls**.
2. Choose a boundary layer to use the Masking tool with, and click the check box to display the layer onto the map.
3. Select the mask icon to the right of the check box to apply the Masking tool.



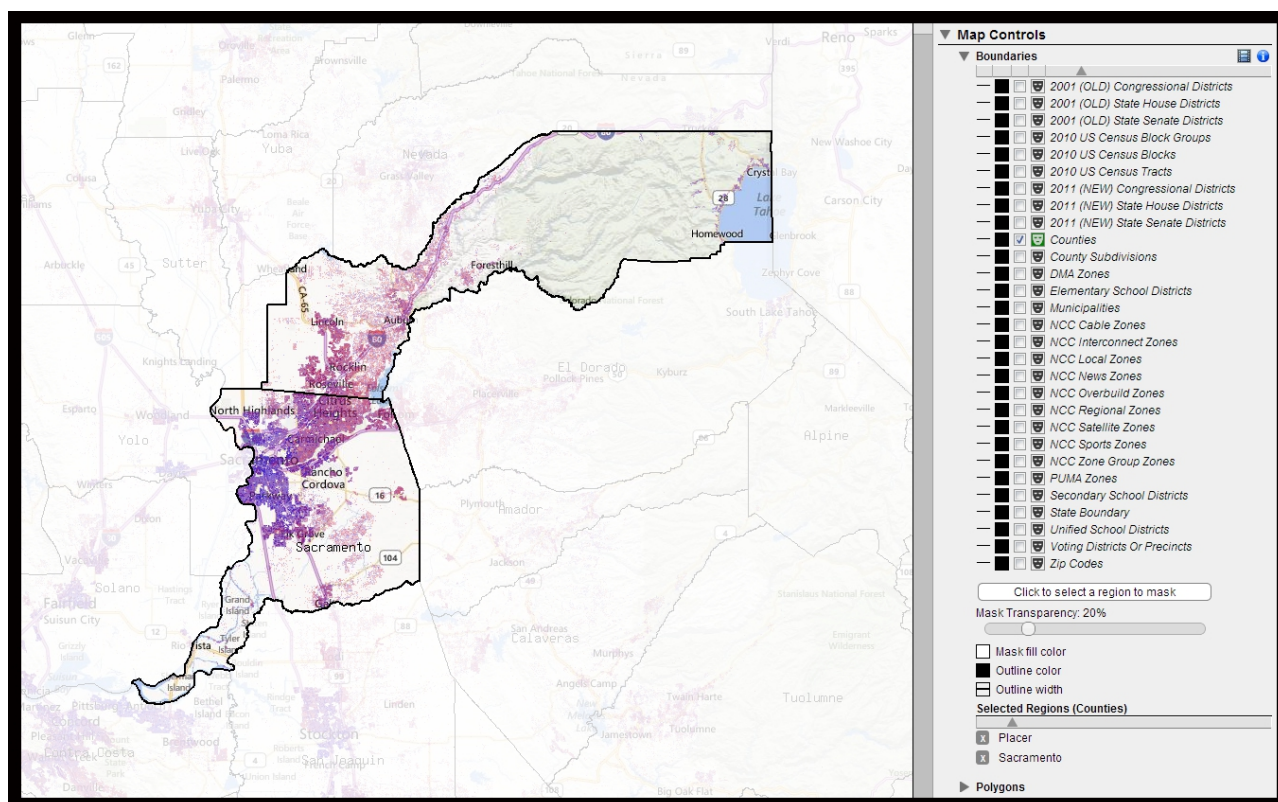
4. A drop down section will appear below the boundaries list containing the settings for Masking. Choose your Mask Transparency, Mask fill color, Outline color, and Outline width:



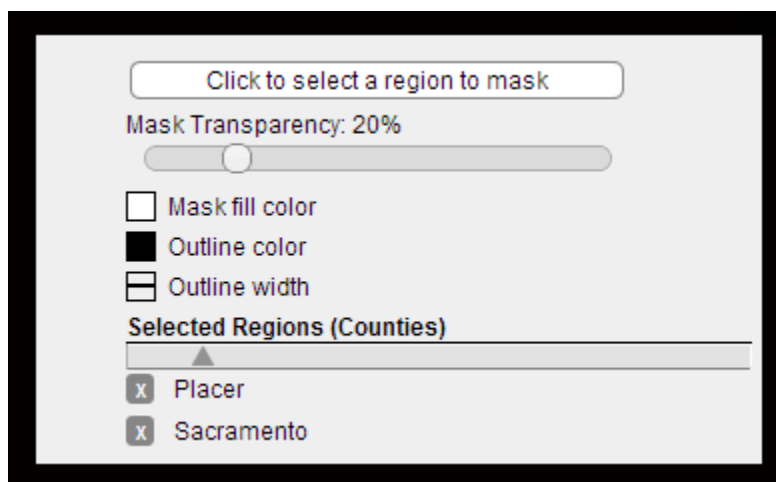
- **Mask Transparency:** controls the transparency of the Masking layer.
 - **Mask fill color:** color that is used to mask over the unselected areas.
 - **Outline color:** color that is used for the outline of selected regions.
 - **Outline width:** controls the width of the selected region outline.
5. The Masking tool will start with the “region selection” option enabled. Move your cursor over the map, to a region and click to select it.



6. The region will be selected and added to the **Selected Regions (Boundary)** list. The Masking layer will then redraw to expose this region.



7. To select more regions click on the “Click to select a region to mask” button and select another region from the map.



8. Continue selecting regions (Step #7) until you have all your desired regions selected.