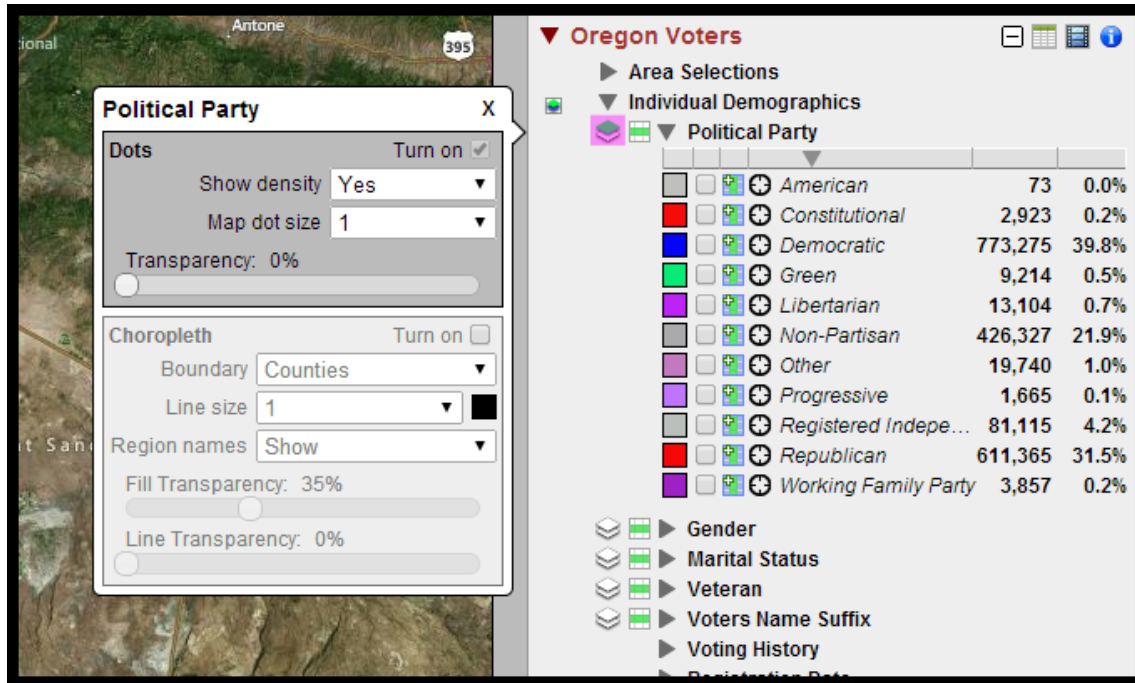


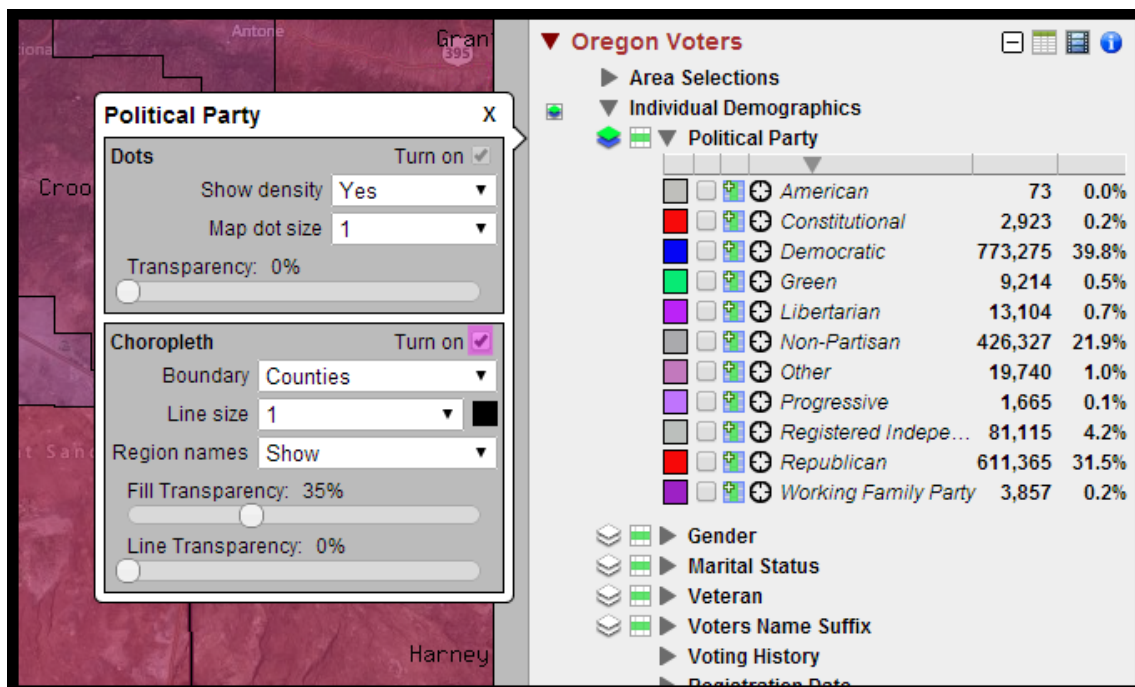
# Choropleth Maps

Voter Mapping is equipped with a feature that allows you to color geographical areas based on the concentration of attributes within a selected field.

1. Click on a double layer icon to the left of a desired Data Field.

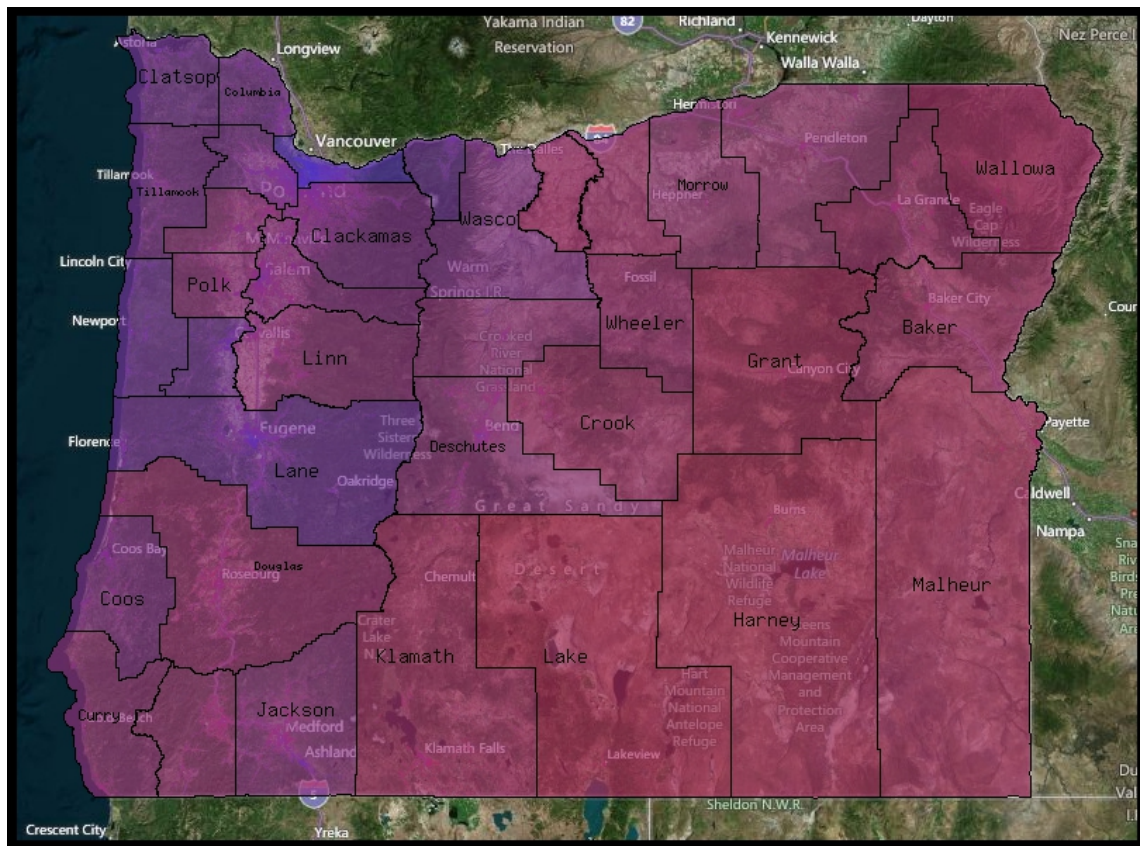


2. A side window will appear containing the Data Field Name, a Dots section, and a Choropleth section.
3. Click the Turn on check box within the Choropleth section to activate the display.



4. There are 5 Choropleth settings to choose from:

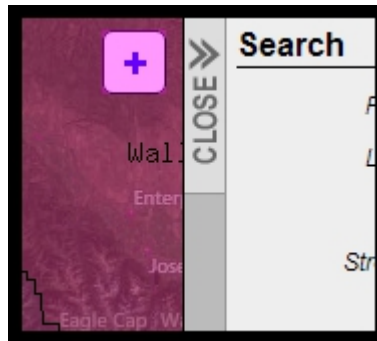
- **Boundary** – Boundaries change what kind of area is used to Choropleth the map.
- **Line size** – Changes the line size of the lines between the different boundary areas.
- **Line Color** - Changes the color of the lines between the boundaries.
- **Fill Transparency** – Changes the fill transparency of the Choropleth color.
- **Line Transparency** – Changes of transparency of the boundary lines.
- **Region names** – Toggles the titles of the boundaries currently displayed.



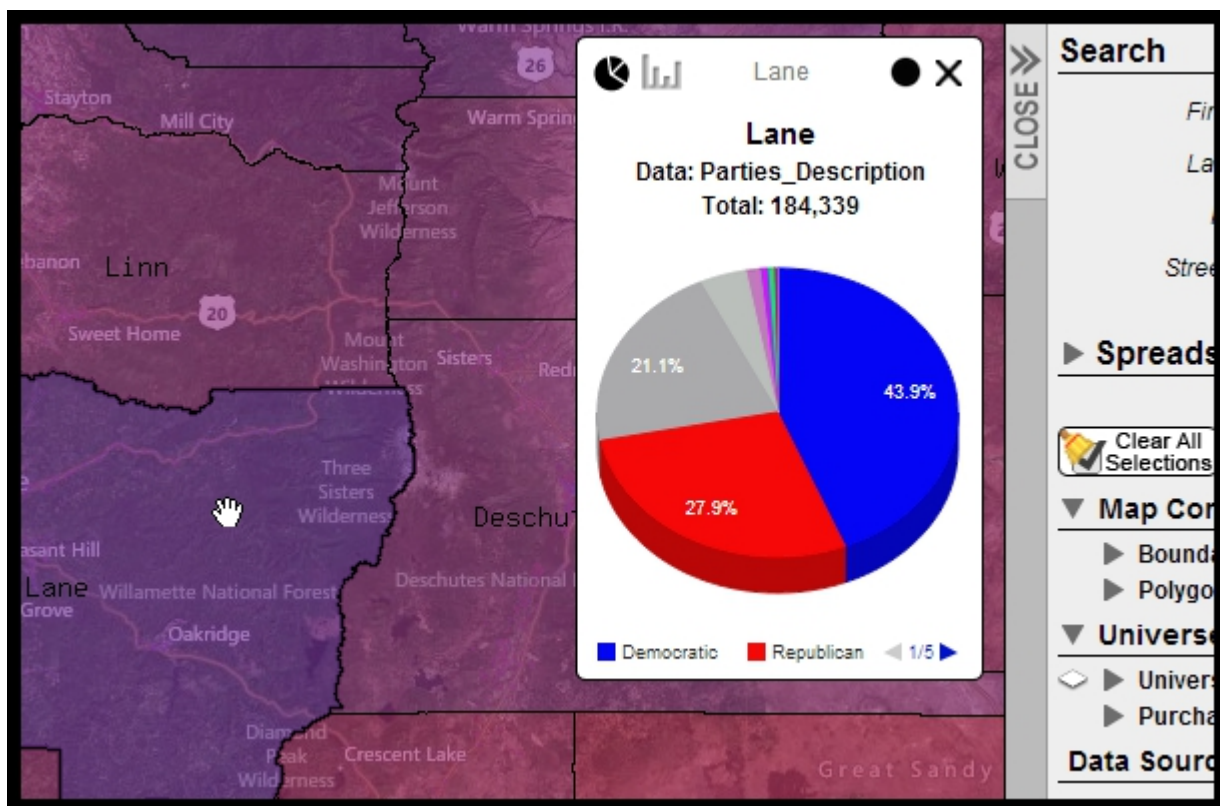
## Graph Cards

While the Choropleth layer is turned on, you can create graphs showing the Data Attribute values for voters in each boundary area.

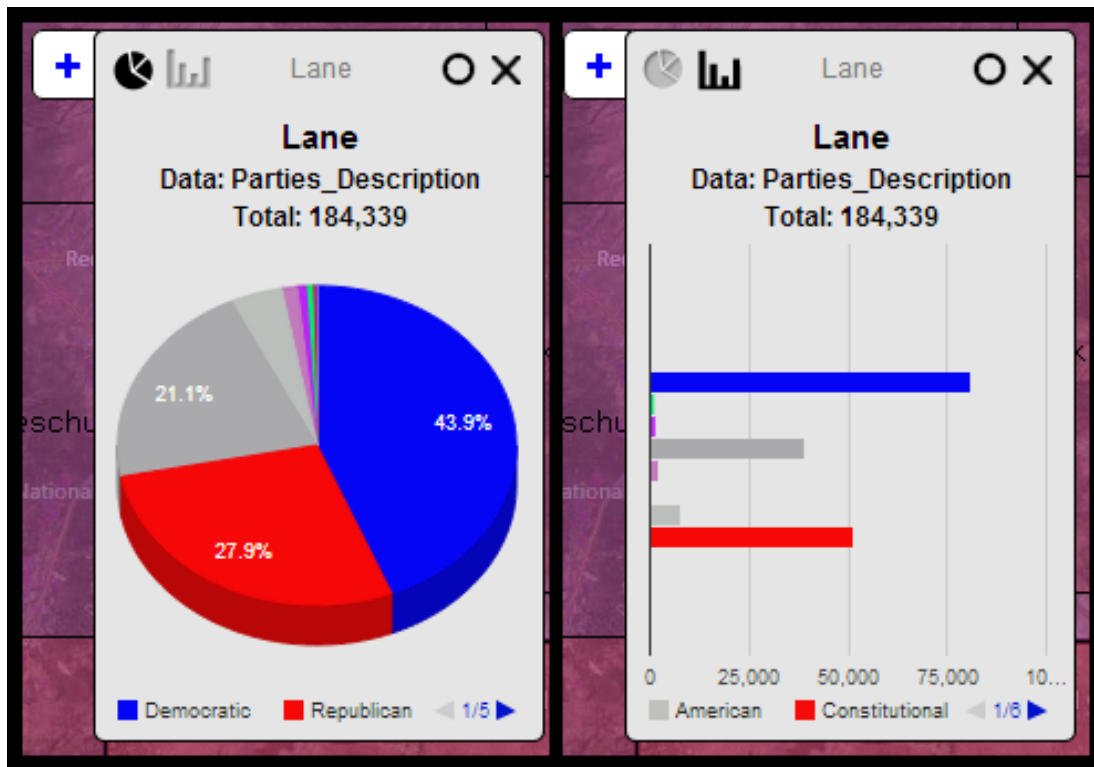
1. With the Choropleth layer applied, click on the blue plus icon located at the top right portion of the map.



2. As you move your cursor over different Choropleth Boundaries the graph will change to display the information for the corresponding area.



3. You can change the type of graph by clicking either the pie or bar chart icons on the upper left corner of the card.



4. You can open up more cards by clicking on the choropleth boundary to lock the current graph card. Once a graph card is locked another blue plus icon will appear. Click on the plus icon to open a new graph card.
5. The most recent card will become the active card. The active card will contain a solid black circle icon in its upper right corner and be white, while the inactive card(s) will have hollow black circles and be dark gray. To change which card is active, click on the hollow circle on an inactive card.
6. Notice the legend at the bottom of the card. You can cycle through this legend by clicking on the small blue arrow at the bottom of a graph card.
7. Click the X at the upper right corner of a card to close it.