

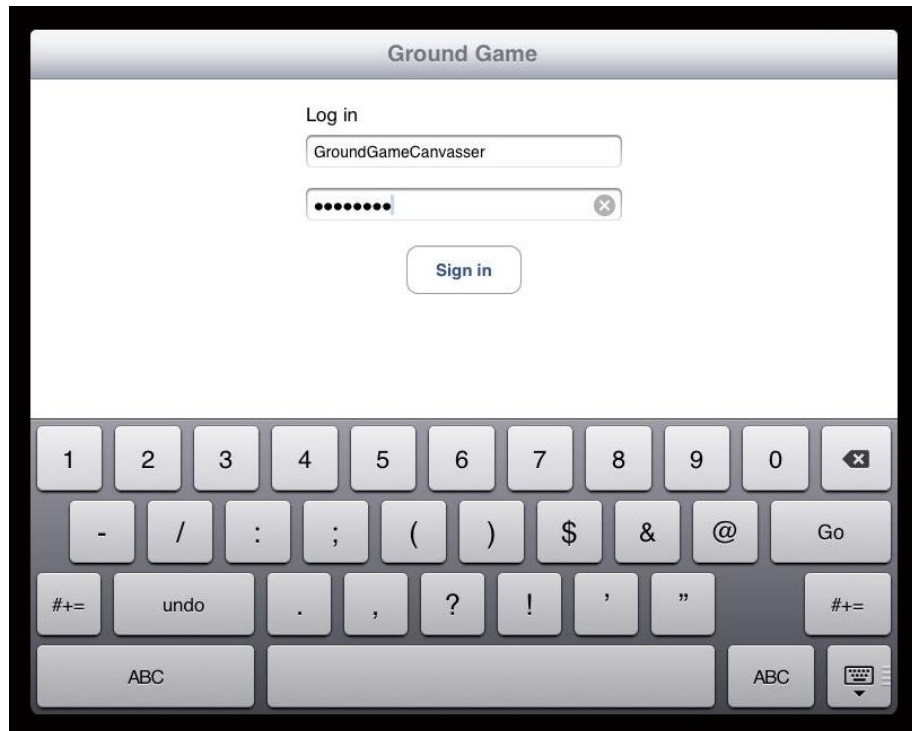
## Ground Game Mobile App ( Apple iOS Devices )

Ground Game is a mobile canvassing application that works in conjunction with VoterMapping.

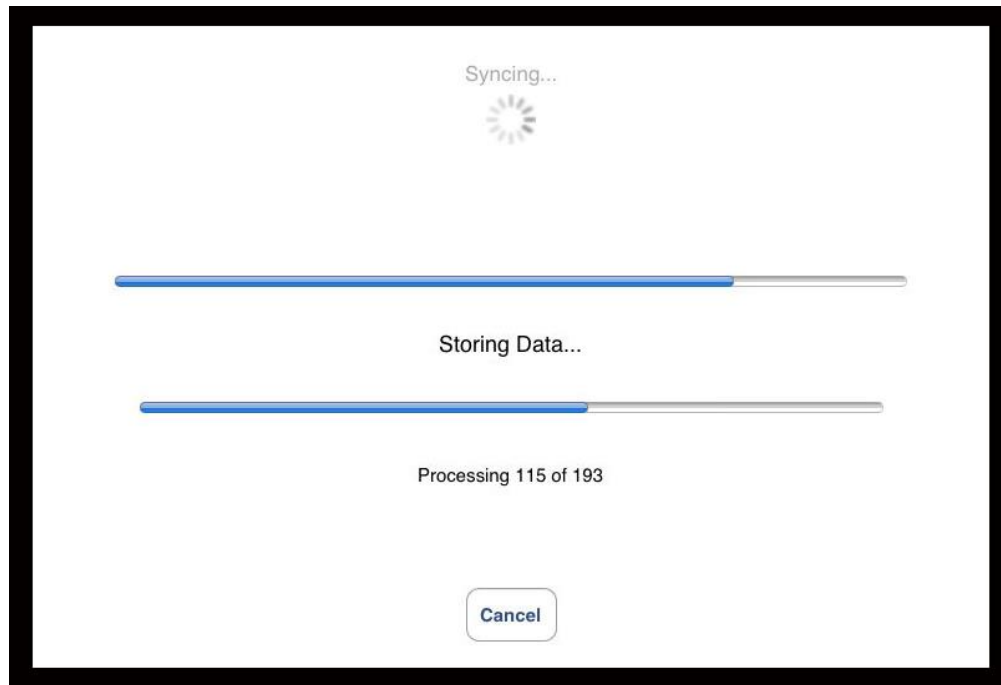
As a Canvasser using Ground Game, you will be able to login to your account, access, and fill out surveys, and send them to your supervisor.

### Filling Out Surveys and Assigning Voter Statuses

1. Login to GroundGame using your username and password.



2. GroundGame will automatically start to sync and download your assigned walking lists, surveys, and campaigns.



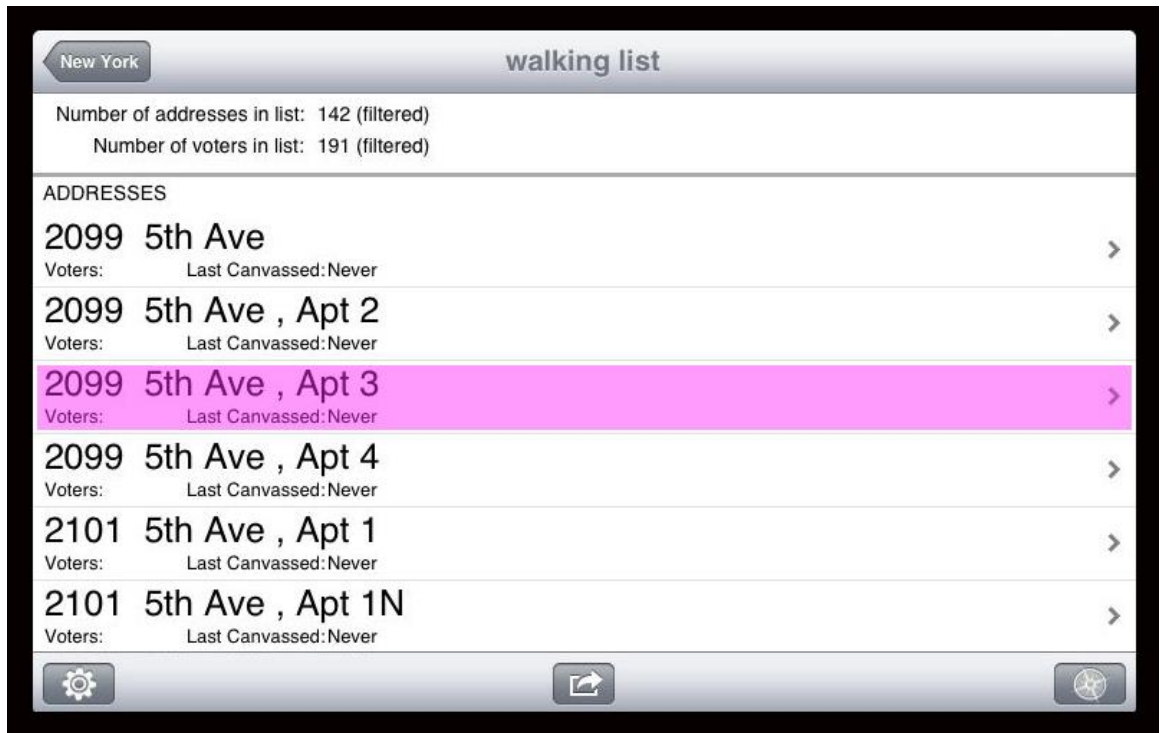
3. After the initial sync is complete, a page will appear containing all the campaigns you are working on. This is your campaign page. Choose a campaign to start canvassing by tapping on its name.



4. A page will load containing all of the walking lists you have been assigned to for the chosen campaign. Tap on the walking list you want to start canvassing.



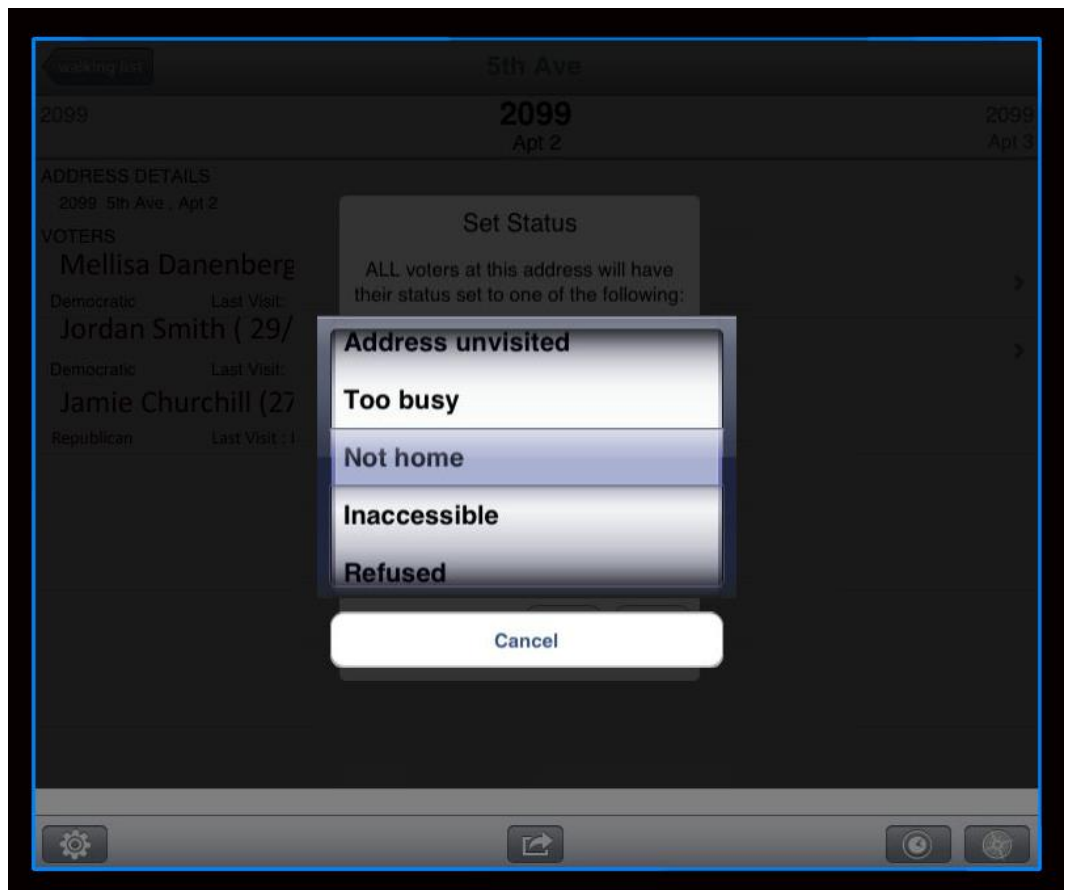
5. A Walking List Details page will appear containing the closest addresses from your current location. Tap on an address when you are ready to canvass its residents.



6. The Address Details page will appear containing information about each voter at that address. You swipe the screen either to the left or to the right to travel to the next house belonging to the same street.



7. If for some reason you aren't able to canvass anyone at the current address tap on the clock icon to set the voter status for the entire address.
- Refused
  - Inaccessible
  - Not Home
  - Too Busy
  - Unvisited



8. If you are able to canvass a voter/voters, tap on the corresponding voters name on the address details page. This will bring up the Voter Details page.



9. From the Voter Details page you can begin canvassing by tapping on the survey.



10. Proceed to fill out the survey by choosing answers for the multiple choice questions by tapping on the answer and choosing answers through the drop down box.

The screenshot shows a survey application interface. At the top, there is a header bar with the text "1st Ave S". Below the header, the name "Amber Hoxie" is displayed. The section is titled "INSTRUCTIONS" and contains the text: "Approach voters with a smile. Remember you are a representative of the organization." The first question is "1. Hello. My name is [name]". The second question is "2. Do you approve or disapprove of the candidate?" with options: "A: Approve", "B: Disapprove", and "C: Don't know / Refused". A dropdown menu is open over the second question, showing the options: "Unanswered", "A: Approve", "B: Disapprove", and "C: Don't know / Refused". A "Cancel" button is visible below the dropdown menu. The third question is "3. Do you approve or disapprove of the candidate?" with the same options as the second question. The bottom of the screen shows a navigation bar with icons for back, forward, and other functions.

11. For the text-input questions tap on the blank answer space and type in the answer.

The screenshot shows a survey application interface. At the top, there is a header bar with the text "1st Ave S". Below the header, the text "borrow enough to make good on all its promises. Some people say it is reckless to even debate not raising the debt limit. Other people say the debt limit should only be increased after there is agreement on major cuts in government spending. Who do you agree with more?" is displayed. The options are: "A: Those who say it's reckless not to raise the debt limit", "B: Those who say only raise the limit after major cuts are made", and "C: Don't know". Below the options, there is a text input field with the text "Unanswered". The question number "12. Email Address" is displayed. The text input field contains the text "jamie@gm". A keyboard is displayed at the bottom of the screen, showing the letters Q, W, E, R, T, Y, U, I, O, P, A, S, D, F, G, H, J, K, L, Z, X, C, V, B, N, M, and punctuation marks. The keyboard also includes a "Done" button and a "?123" button.



12. If a problem arrives you are able to clear the survey answers by tapping on the Eraser button

5th Ave

Jamie Smith

INSTRUCTIONS

Approach voters with a smile. Remember you are a representative of the organization.

1. Hello. My name is [name]. Can I ask you a few questions?

2. Do you approve or disapprove of the job Barack Obama is doing as president?

A: Approve  
B: Disapprove  
C: Don't Know / Refused

Unanswered

3. Do you approve or disapprove of the job Congress is doing?

↑ ↗ ↻ ✏

5th Ave

Jordan Smith

INSTRUCTIONS

Approach voters with a smile. Remember you are a representative of the organization.

1. Hello. My name is [name]. Can I ask you a few questions?

2. Do you approve or disapprove of the job Barack Obama is doing as president?

A: Approve  
B: Disapprove  
C: Don't Know / Refused

Unanswered

3. Do you approve or disapprove of the job Congress is doing?

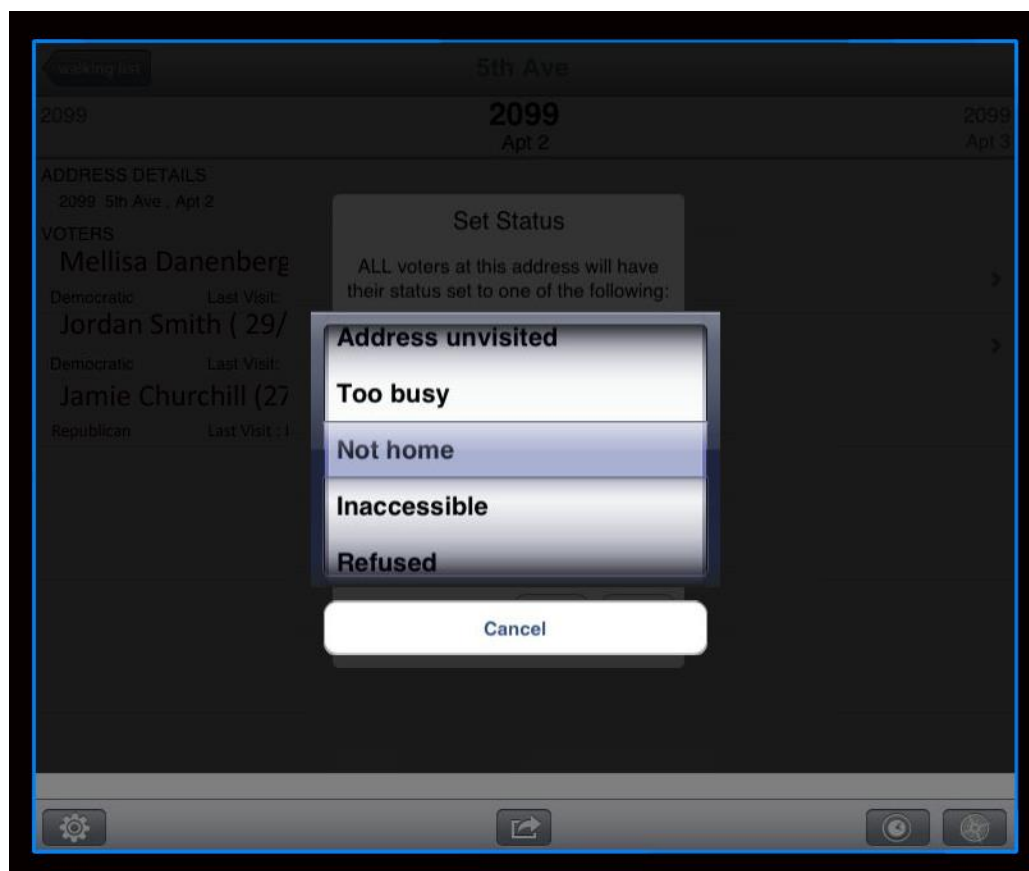
A: Approve  
B: Disapprove  
C: Don't Know / Refused

Unanswered

4. How satisfied are you with the way things are going in the country today -- are you very

↑ ↗ ↻ ✏

13. If the voter isn't at home, you can set the voters status by tapping the clock icon on the bottom right of the screen. Setting statuses on the Survey Page or the Voter Details page is different from setting statuses on the Address Details page because the button on the Address details page changes the status of every voter living at that address, whereas the button on the Voter Details page only changes the status of that voter.



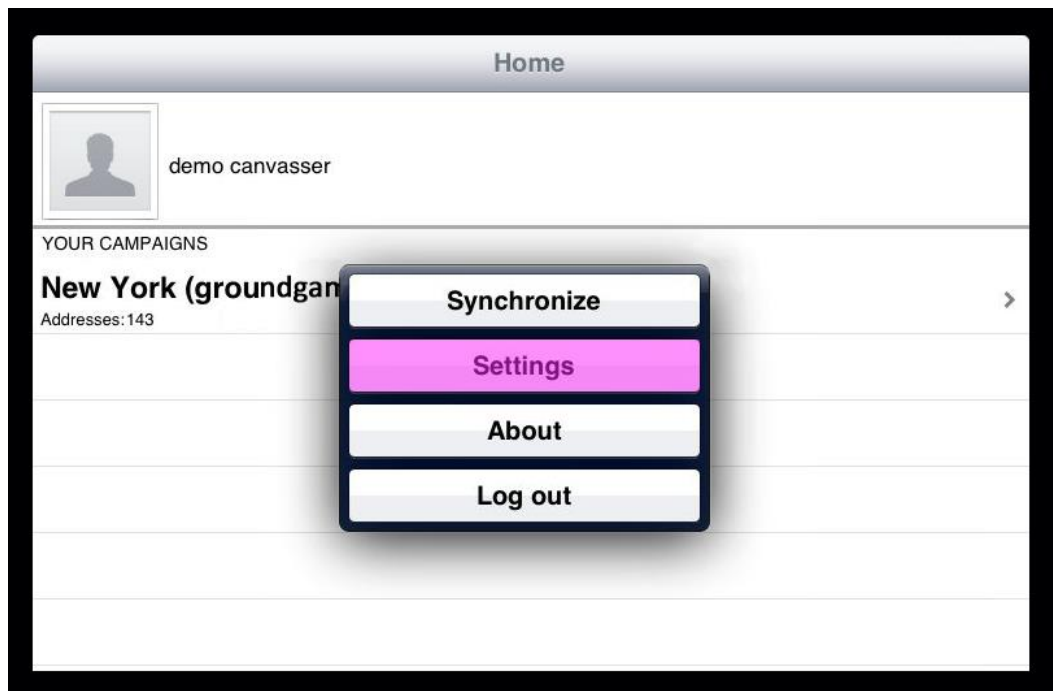
## Pushing & Syncing

The GroundGame application automatically stores answers in the devices database, so you don't need to send answers back to Votermapping each time you canvass someone or log out of the app. Instead, you can sync or push once you are finished canvassing a group of people. Syncing and pushing requires an internet connection, so survey as many people as possible and push when you can.

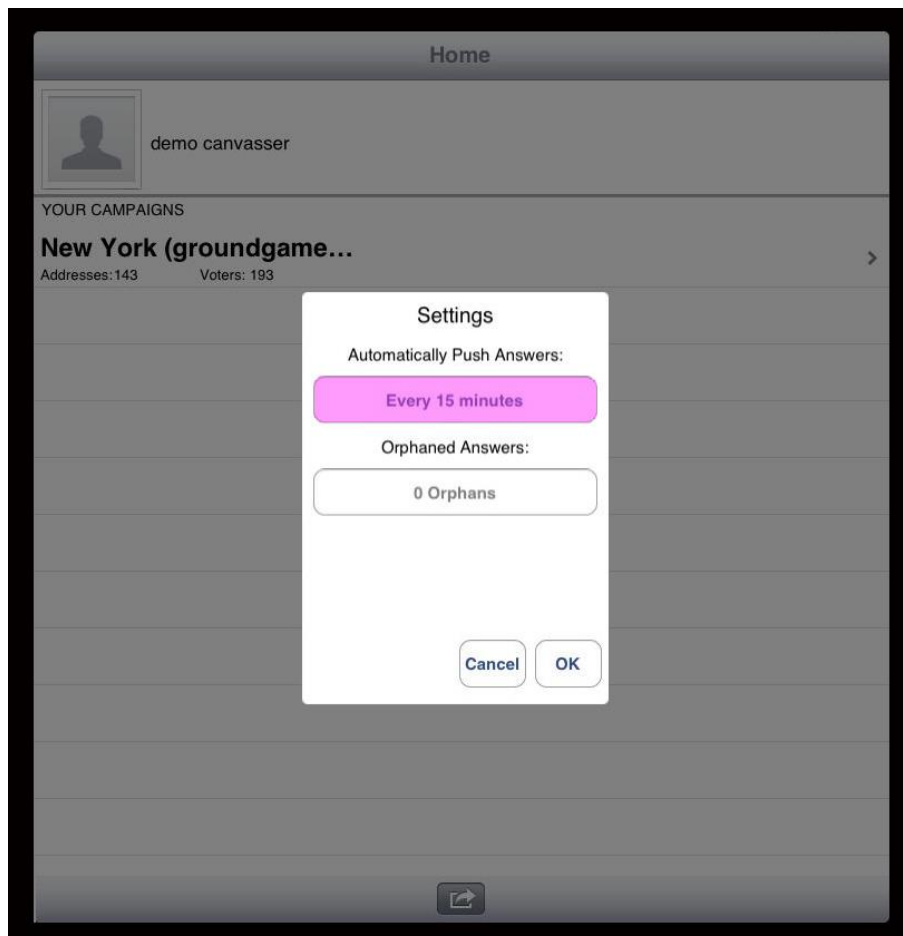
### Automatically Push Answers



1. From any page, tap on the menu icon. A pop-up box will appear containing the options "Synchronize", "Settings", "About", and "Logout".



2. Tap on "Settings". A window will appear containing "Automatically Push Answer".



3. Tap on the box below “Automatically Push Answers”
4. A window will open up with a list of time intervals to set your device to automatically push answers. Remember that you can only push when you have an internet connection.

## Push Answers

1. From the survey page, after you fill out a survey or apply a voter status, tap on the arrow icon. If you have internet connection, your answers for that survey will push.

5th Ave

**Jamie Smith**

INSTRUCTIONS

Approach voters with a smile. Remember you are a representative of the organization.

1. Hello. My name is [name]. Can I ask you a few questions?

2. Do you approve or disapprove of the job Barack Obama is doing as president?

A: Approve  
B: Disapprove  
C: Don't Know / Refused

Unanswered

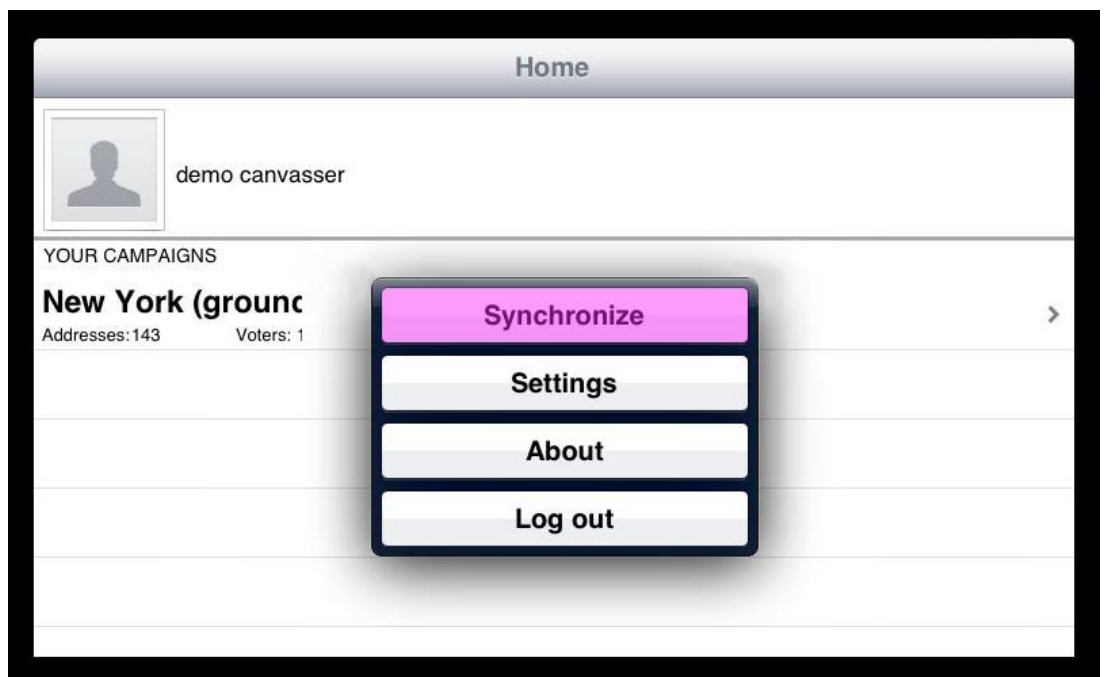
↑

## Syncing

1. From any page, tap on the menu icon/button. A pop-up box will appear containing the options “Synchronize”, “Settings”, “About”, and “Logout”.



2. Tap on "Synchronize".



3. The GroundGame will start syncing just like when you initially logging into your account.

Syncing...



Storing Data...



Processing 115 of 193

Cancel

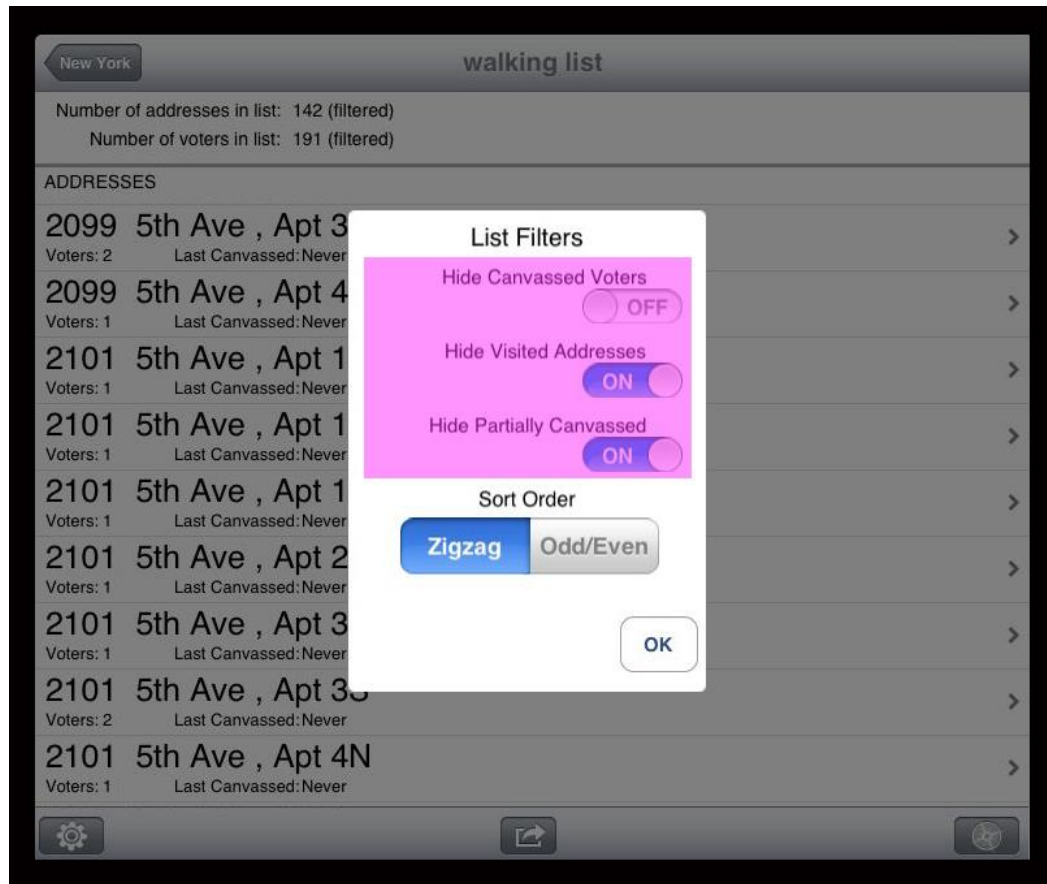
## Filters & Sorting

1. Tap on the gear button on the Walking List Details page.



2. A page will open up called List Filters and it will contain several options.

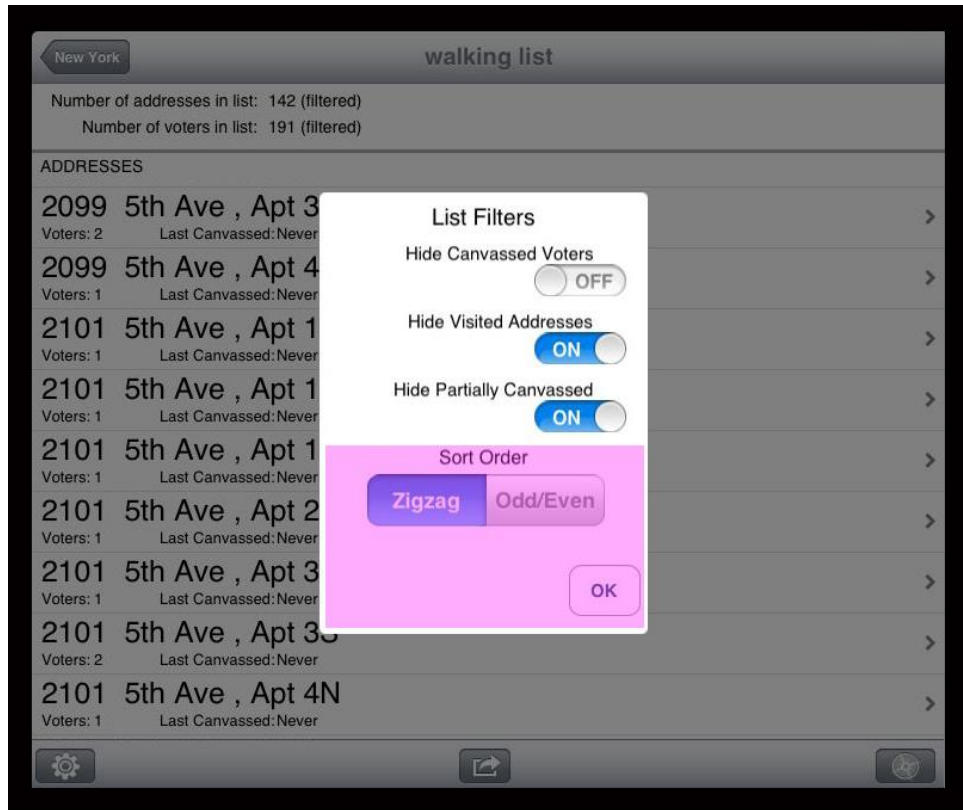




### 3. Filters :

Filters both the addresses from the address and street list, and along with the map view. Swipe slider below the option to turn it on or off.

- Hide Canvassed Voters: Voters who have answers to all of their survey questions become invisible to the Address Details Page.
- Hide Visited Addresses: Addresses that have been tapped become invisible to the Walking List Details page.
- Hide Partially Canvassed: Voters who have some answers to their survey questions become invisible to the Address Details Page.

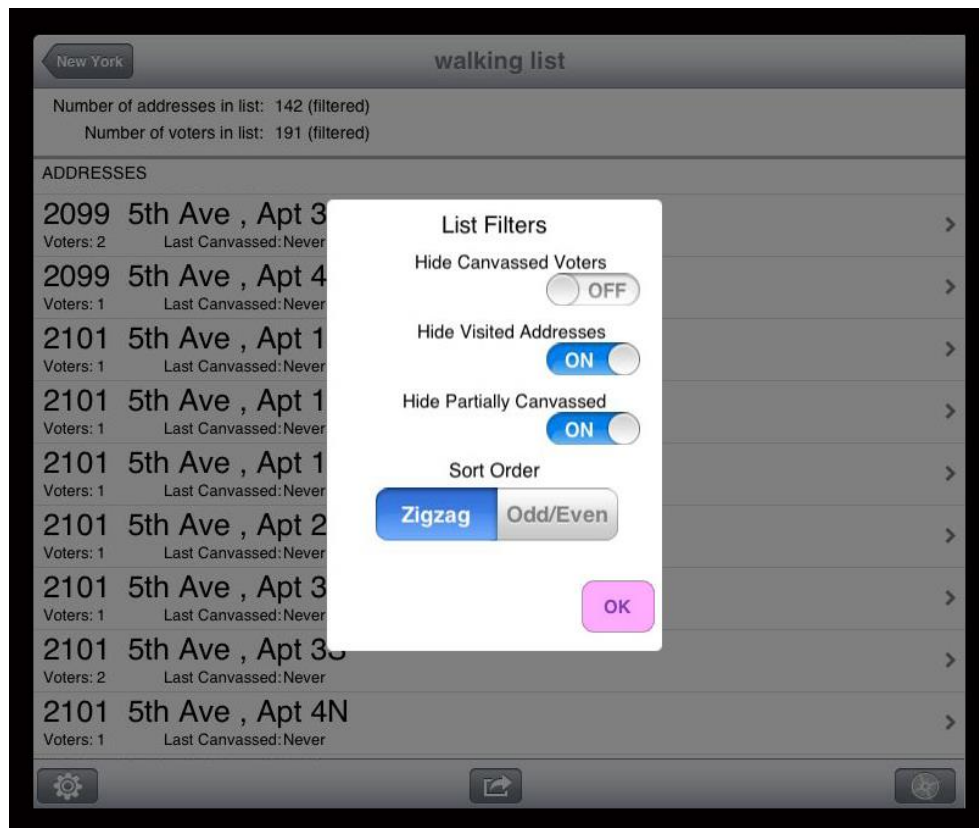


#### 4. Sort Order

Sort order changes the order of addresses on the Walking List Details page. The two orders are :

- Zig-Zag: Addresses on a street are organized in numerical order. In real life, this means you walk from one side of the street to the other to canvass your voters.
- Odd-Even: Addresses on a street are organized by having all odd numbered addresses together, followed by all even numbered addresses. In real life this means you walk up one side of the street and then down the other.

5. After you have set the desired Filter & Sorting options tap OK to return the original page you came from.



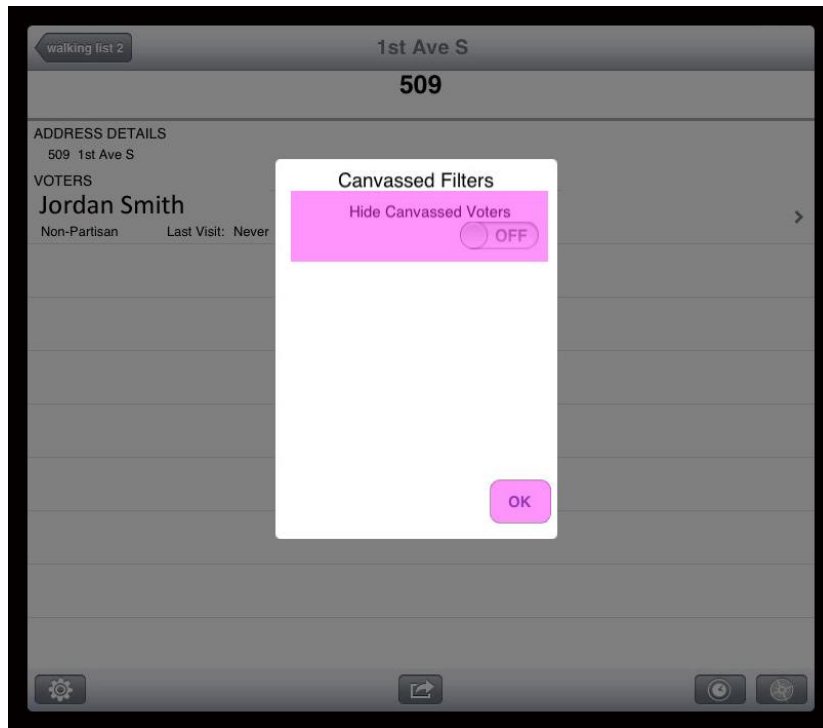
## Canvassed Filters (Address Details/Voter Details)

### Address Details

1. From either the Address Details or Voter Details page tap on the Gear Icon.



2. A Canvassed Filters window will appear containing the Hide Canvassed Voters option.



3. To turn on or off the hide option swipe the slider and tap “OK”.

## Map View

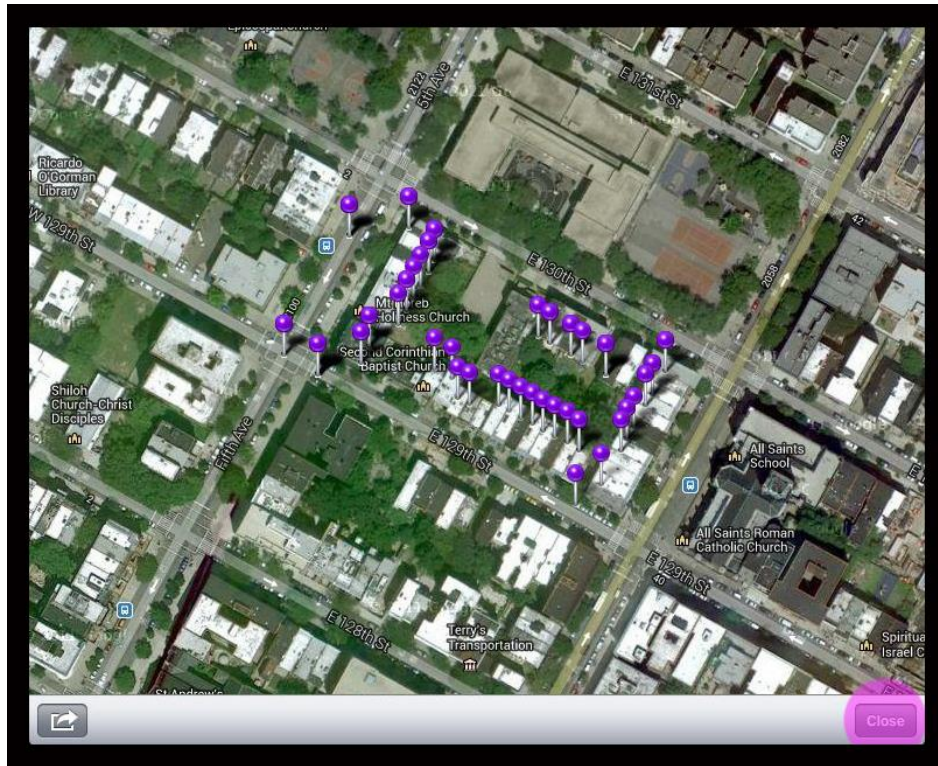
The Map View feature allows you to see the voters you need to canvass marked on an interactive map. To use the map view feature you will need to have an internet connection.

### Map View (Entire Walking List)

1. Tap on the map button from the Walking List Details page.



2. A page will open up containing the entire walking list with addresses displayed onto Google Maps with purple map pins.



3. Tap on one of the map markers to enter the Address Details page for that address, or tap close.



## Map View (Individual Address)

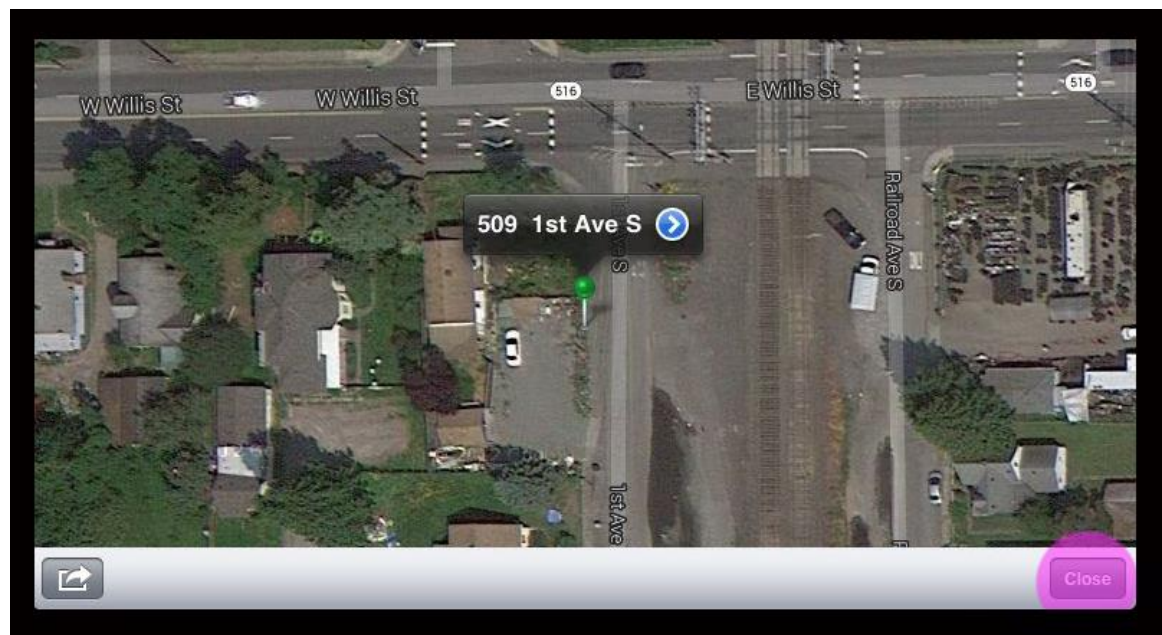
1. Tap on the map button from either the Address Details, Voter Details, or the Survey



page.



2. A page will open up containing Google Maps with address located along the same street as the address you were on in the previous page. The main address will be displayed as a green pin.



3. Tap on a marker to enter the Address Details page for that address, or tap close.